

**SECTION 3. PARTS INFORMATION**

**3-1. INTRODUCTION**

This section lists the replaceable parts of the Henny Penny HCH-930/932 units.

**3-2. GENUINE PARTS**

Use only genuine Henny Penny parts in your cabinet. Using a part of lesser quality or substitute design may result in damage to the unit, or personal injury.

**3-3. WHEN ORDERING PARTS**

Once the parts that you want to order have been found in the parts list, write down the following information:

Example:	Item Number	<u>19</u>
	Part Number	<u>16684</u>
	Description	<u>Fan - 120 V</u>

From data plate, list the following information:

Example:	Product Number	<u>HCH930.0</u>
	Serial Number	<u>AW001IE</u>
	Voltage	<u>120 Volt</u>

**3-4. PRICES**

Your distributor has a price list and will be glad to inform you of the cost of your parts order.

**3-5. DELIVERY**

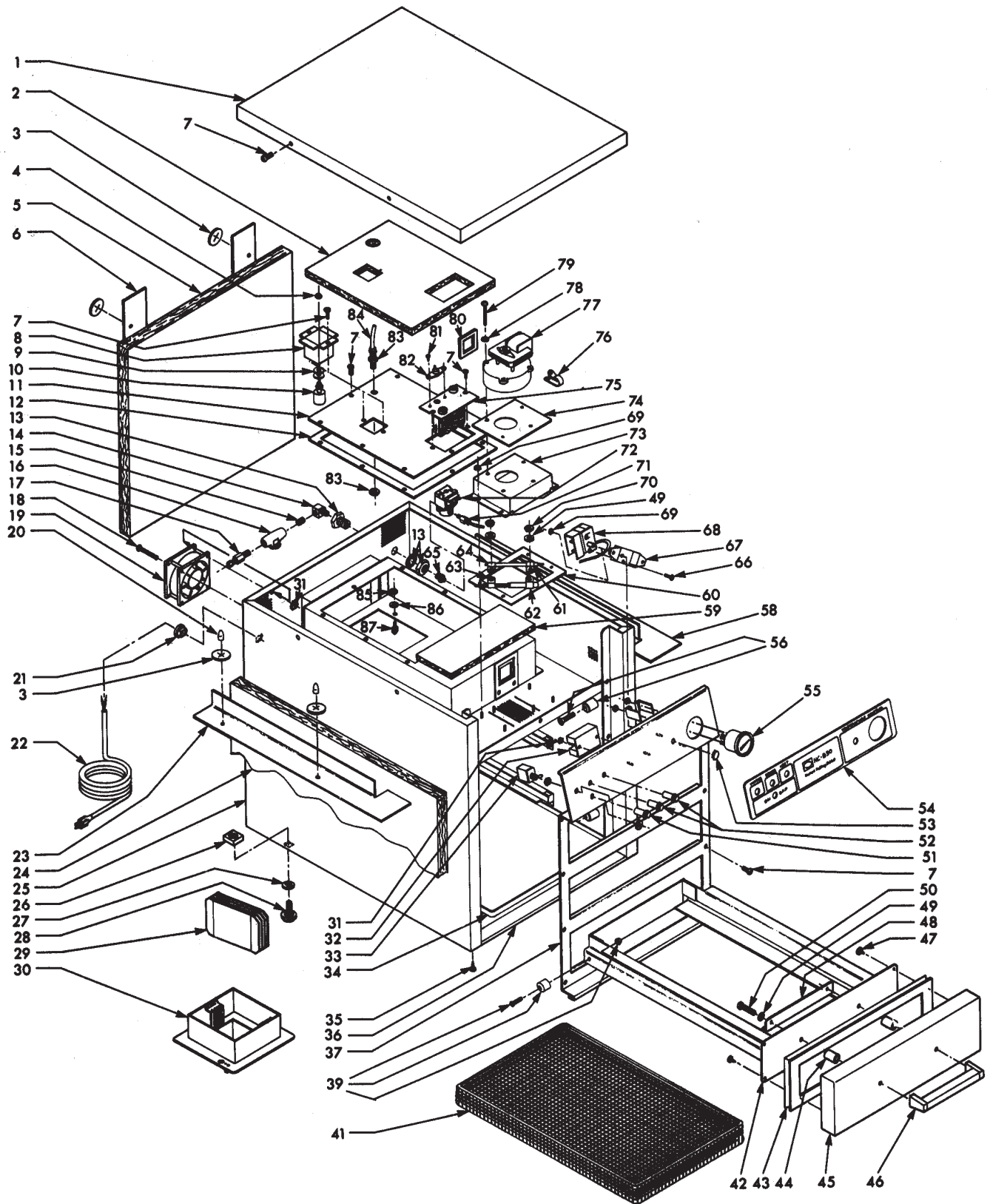
Commonly replaced items are stocked by your local distributor and will be sent out when your order is received. Other parts will be ordered, by your distributor, from Henny Penny Corporation.

**3-6. WARRANTY**

All replacement parts (except lamps and fuses) are warranted for 90 days against manufacturing defects and workmanship. If damage occurs during shipping, notify the carrier at once so that a claim may be properly filed. Refer to warranty in the front of the manual for other rights and limitations.

**3-7. RECOMMENDED  
SPARE PARTS FOR  
DISTRIBUTORS**

Recommended replacement parts, stocked by your distributor, are indicated with ✓ in the parts lists. Please use care when ordering recommended parts, because all voltages and variations are marked. Distributors should order parts based upon common voltages and equipment sold in their territory.



**PARTS LIST  
MODEL HC-930 - HC-932**

<u>Item No.</u>	<u>Part No.</u>	<u>Description</u>	<u>Quantity</u>	<u>Item No.</u>	<u>Part No.</u>	<u>Description</u>	<u>Quantity</u>
1	25498	Top - Cabinet	1	√ 51	16624	Signal Light	1
2	25567	Insulation - Access Cover	1	√	54085	Signal Light - CE	1
3	WA02- 001	Washer Insulation (1 1/2" dia.)	8	√ 52	54085	Signal Light - CE	2
4	NS01-010	Nut - Hex (1/8" straight pipe)	1	√	16624	Signal Light	2
5	25565	Insulation - Back	1	53	PL01-001	Button - Plug (1/2")	1
6	25554	Retainer - Insulation Rear	2	54	25862	Decal - Control Panel	1
7	SC01-053	Screw (#8-32 x 1/2" PH Round Head)	AR	√ 55	25183	Thermometer	1
8	25497	Well - Float Switch	1	√ 56	14095	Liner Bearing & Hardware	6
9	25299	Spacer - Float Switch	2	58	25556	Retainer - Insulation - Right	1
√ 10	28856	Float Switch	1	59	25569	Insulation (9" x 3.75")	1
11	25843	Access Cover Assembly	1	60	25127	Gasket Blower Box Bottom	1
12	25445	Gasket - Heater Box	1	61	EF02-031	Clamp (1/4" ID x 3/8")	1
13	FP01-013	Bulkhead Adaptor	1	62	EF02-033	Clamp (7/16" ID x 3/8")	1
14	FP05-007	Elbow (1/4" NPT x 1/4" NPT)	1	63	EF02-032	Clamp (5/16" 10 x 3/8")	1
15	FP02-009	Nipple - Close (1/4" NPT x 7/8")	1	64	EF02 030	Clamp (1/8" ID x 3/8")	1
√ 16	25208	Strainer Water	1	65	FP01-012	Nipple - Reducing	1
17	FP05-006	Fitting (1/4" Tube to 1/4" NPT)	1	66	SC01-023	Screw (#6-32 x 1/4" PH Rd Hd)	2
18	SC01-037	Screw (#6-32 x 2" PH Pan Head)	AR	67	25903	Bracket Thermostat Mounting	1
√ 19	16684	Fan - 120V	1	√ 68	14209	Thermostat Kit	1
√	16688	Fan - 240V	1	69	NS02-006	Nut - Hex (#10-24 Keps)	AR
20	MS01-133	Cover - Stud	4	70	NS01-007	Nut - Hex (#10-24)	2
21	EF02-017	Relief - Strain	1	71	FP05-003	Fitting (1/4" Tube to 1/8" Pipe)	1
22	25203	Power Cord Assembly	1	√ 72	14965	Valve - Solenoid -120 V	1
	44215	Power Cord Assembly - 240V	1	√	14966	Valve - Solenoid - 240 V	1
	42137	Power Cord Assembly - CE	1	73	25598	Fan Box Assembly	1
23	25555	Retainer - Insulation	1	74	25141	Gasket - Blower Box Top	1
24	25566	Insulation - Wrap/Around	1	√ 75	25441	Heater - 120V	1
25	53960	Encl.-Cab.-930-SN:EA0505003 & below	1	√	25571	Heater - 240V	1
25	69927	Encl.-Cab.-930-SN:EA0505004 & above	1	√	27661	Heater - 120V "Enclosed"	1
25	69953	Enclosure - Cabinet-930 - CE	1	76	EF02-037	Clamp (1" ID x 1/2")	1
25	53978	Encl.-Cab.-932-SN:EA0505003 & below	1	√ 77	25221	Blower - 120V	1
25	69952	Encl.-Cab.-932-SN:EA0505004 & above	1	√	25407	Blower - 240V 50 HZ	1
25	69951	Enclosure - Cabinet-932 - CE	1	78	LW02-006	Lockwasher (#8 Internal)	4
26	NS03-013	Nut Cage (3/8" - 16)	4	79	SC01-033	Screw (#8-32 x 2" PH Rd Hd)	4
27	15022	Spacer - Leveler Foot	4	80	25126	Gasket - Blower	1
28	26411	Foot	4	81	SC02-014	Screw (#8-AB x 3/8" PH Truss Hd)	2
29	25246	Baffle Water Pan	4	√ 82	18201	High Limit	1
30	25526	Water Pan Assembly	1	83	FP05-002	Union Bulkhead (1/4	1
31	NS02-005	Nut - Hex (#6-32 Keps)	AR	84	25595	Tubing (1/4")	1
√ 32	25994	Timer - Delay	1	85	NS01-018	Nut - Hex (1/4"-28)	2
√ 33	22195	Switch - Toggle	1	86	LW01-002	Lockwasher (1/4" Split Ring)	2
34	25487	Tray - Drip	1	87	25593	Stud - Threaded	2
35	SC02-016	Screw (#8-AB x 1/2" PH Pan Head)	AR	**	25790	Gasket - Face Plate	1
36	25494	Base - Cabinet	1	**	22232	Legs	4
37	25495	Faceplate Assembly	1	**	31379	Tray Drip (05324 only)	1
	64090	Faceplate Assembly - CE - 930	1				
	64097	Faceplate Assembly - CE - 932	1				
√ 39	14094	Drawer Bearing & Hardware	1				
41	27193	Basket - Wire - Small	3				
**	05015	Pan 12 x 20 x 2.5 (alternate)	3	<b>MODEL 05324 (CFA)</b>			
**	05021	Rack - Wire Grid 10 x 18 (use w/05015)	3	31981	Face Plate Stud Assy.		1
**	31431	Tray Baffle for 05015 Pan	3	32404	Water Pan Assy.		1
**	05033	1/2 SS Pan 12 x 10.5 x 2.5 (alternate)	3	31965	Drawer Bearing		6
**	05046	1/2 wire grid (use w/05033)	3	31970	Drawer Frame Assy.		1
42	25821	Drawer Weld Assembly	3	31971	Drawer Assy.		1
√ 43	25778	Gasket - Drawer	3	31972	Nylatch Grommet		6
44	25773	Spacer Drawer Handle (use only w/ 25412)	6	31973	Nylatch Plunger		6
45	25772	Drawer Front Assembly	3	31985	Left Drawer Rail Assy.		3
46	25412	Handle Drawer	3	31986	Right Drawer Rail Assy.		3
47	SC02-016	Screw (#8-AB x 1/2" PH Pan Hd)	AR	32398	Swivel-Water Pan Latch		1
48	25546	Support - Basket	3	32401	Latch-Water Pan Retaining		1
49	LW02-005	Lockwasher (#10 Internal)	AR	31529	Baffle		4
50	SC01 -094	Screw (#19-24 x 1-1/2-for 25412)	AR				
	SC01-074	Screw (#10-32 x 1-1/2-for 31396)	AR				

√ recommended parts/\*\*Not Shown

