



OPERATOR'S M A N U A L

AUTOMATIC BREADING MACHINE

MODEL

BM-110



HENNY PENNY
Engineered to Last™

REGISTER WARRANTY ONLINE AT WWW.HENNYPENNY.COM

OPERATING INSTRUCTIONS

1. Turn power switch to the ON position.
2. Place breading into drum. Drum will hold up to 10 pounds of breading.
3. Feed raw moist product into hopper assembly.
4. Product will emerge from the other end of drum.
5. Place product into pan or wire grid for frying process.



Do not place hands or objects into drum while machine is operating, or personal injury or damage to unit could result.

CLEANING (Refer to Exploded View)

1. Remove hopper (32) and hopper stand (33) from unit.
2. Dissassemble end caps (36), blade assembly (34), and cylinder assembly (34), and cylinder assembly (35) from drum (37). All of these items can be taken to a sink for easy cleaning.
3. Clean base of unit with a soft cloth and soapy water.

CAUTION

Do not use steel wool, other abrasive cleaners or cleaners/sanitizers containing chlorine, bromine, iodine or ammonia chemicals, as these will deteriorate the stainless steel material and shorten the life of the unit.

Avoid getting water into motor and drive compartment, or damage to electrical components could result.

MAINTENANCE INSTRUCTIONS

The following information will assist you when replacing components within the unit becomes necessary. (Refer to exploded drawing.)



To avoid electrical shock or property damage, move the power switch to OFF and disconnect main circuit breaker, or unplug cord at wall receptacle.

POWER SWITCH

1. Remove screws holding base cover to unit and remove.
2. Remove the switch mounting nut, locknut, and the ON/OFF plate, and remove the switch.
3. Place wires on new switch exactly as they were on the old switch.
4. Replace mounting nut, ON/OFF plate, and locknut, then tighten.

LARGE SPROCKET

1. Remove screws holding base cover to unit and remove.
2. Using a 1/8" Allen wrench, remove outer aluminum wheel and spacer from drive shaft.
3. Remove master link from chain and remove chain.
4. Slide drive shaft out and using a 3/32" Allen wrench, loosen set screws and remove large sprocket from drive shaft.
5. Replace large sprocket and assemble by reversing the above order.

NOTICE

Install new sprocket on drive shaft at the same location as old sprocket.

SMALL SPROCKET

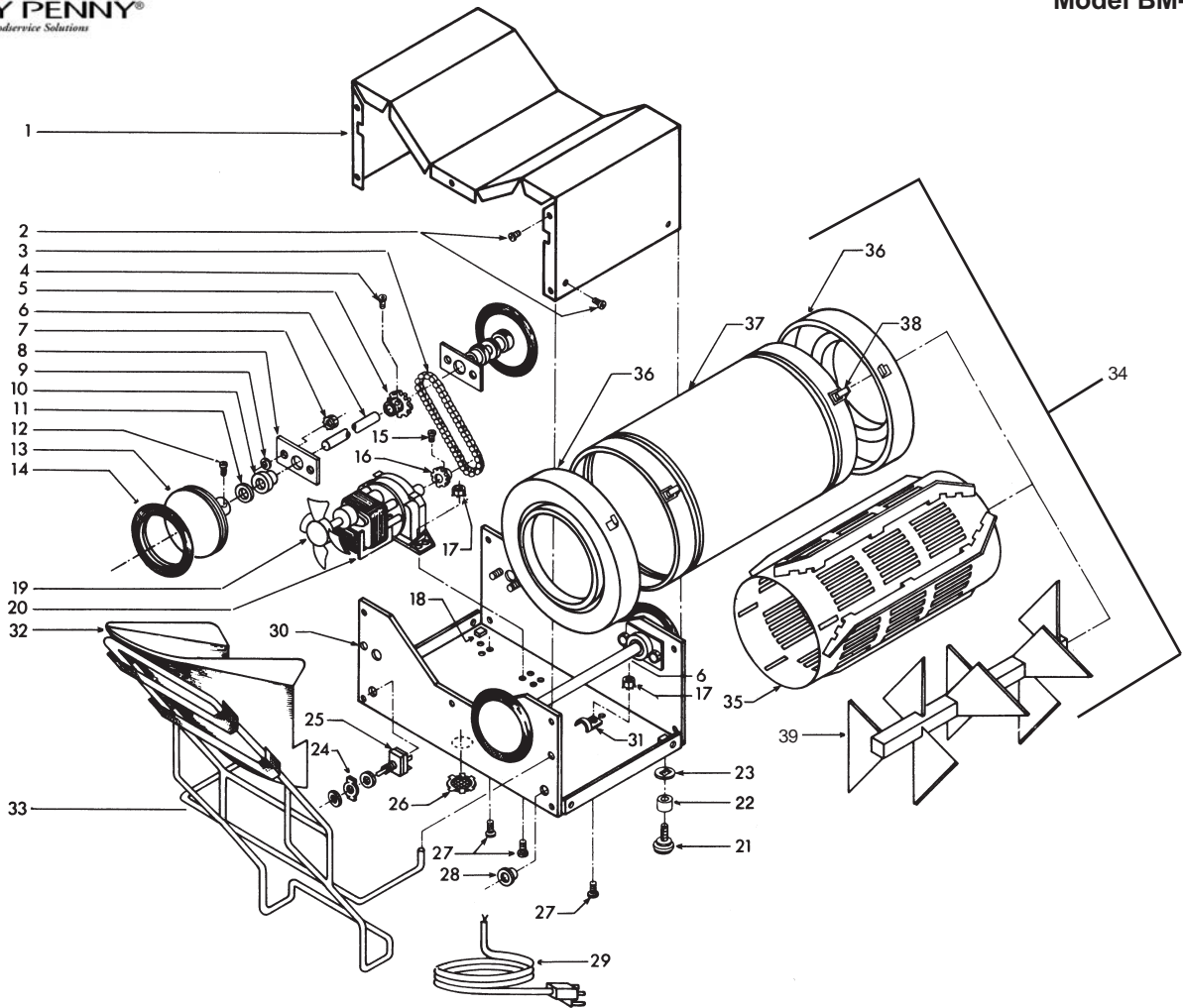
1. Remove screws holding base cover to unit and remove.
2. Remove master link from chain and remove chain.
3. Using a 3/32" Allen wrench, loosen set screw and remove small sprocket from motor.
4. Install new sprocket to motor.

MOTOR

1. Remove screws holding base cover to unit and remove.
2. Loosen wire nut from motor wires and remove motor wires.
3. Using a 3/8" wrench and a Phillips head screwdriver, remove four screws and nuts holding motor to base.
4. Install new motor.
5. Place old fan blade on new motor.

NOTICE

Be sure motor wires are secure in wire nut. Use electrical tape to hold nut.



PARTS LIST

No.	Part No.	Description	Qty.	No.	Part No.	Description	Qty.
1	15859	Base Cover	1	19	15023	Fan Blade	1
2	SC04-003	8 x 3/8 PH	14	below SN: KD0506001			
√ 3	15020	Chain	1	√ 20	75770	Motor - 120/240V	1
4	SC05-001	1/4 - 20 x 3/8	4	SN: KD0705004 & above			
5	14891	Large Sprocket Kit	1	√ 20	14722	Kit-Motor Replacement	1
		SN: KD0705004 & above		SN: KD0705003 & below			
5	14890	Large Sprocket Kit	1	21	26411	Foot	4
		SN: KD0506001 - KD0705003		22	26386	Foot Spacer	4
5	15006	Large Sprocket	1	23	15022	Foot Leveler	4
		below SN: KD0506001		√ 24	22197	ON/OFF Plate	1
6	15014	Drive Shaft	2	√ 25	22195	Switch (w/lock & mntg. nuts)	1
7	NS02-002	1/4 x 20 Nut	8	26	PL01-002	Vent Plug	1
8	15011	Bearing Retainer	4	27	SC01-002	10-32 x 1/2	5
9	LW01-002	Split Ring Washer	8	28	EF02-017	Strain Relief	1
10	15019	Bearing - White Nyliner	4	29	15063	Power Cord	1
11	15018	Wheel Spacer	4	30	15862	Base	1
12	SC05-001	1/4 - 20 x 3/8	4	31	EF02-015	Clip 3/8	1
√ 13	15016	Aluminum Wheel	4	32	15003	Hopper Ass'y	1
√ 14	15017	Rubber Tire	4	33	15004	Hopper Stand	1
15	SC05-003	10-32 x 1/8	4	34	15002	ASSY-BM DRUM	1
16	14889	Small Sprocket Kit	1	35	15029	--Cylinder Ass'y	1
		SN: KD0506001 & above		36	15045	--End Cap	2
16	15024	Small Sprocket	1	37	15031	--Drum	1
		below SN: KD0506001		√ 38	MS01-532	--Latch	4
17	NS02-001	10-32 Hex Nut	5	---SN: KD0609014 & above			
18	NS03-013	Cage Nut 3/8	4	√ 38	15804	--Latch	4
				---SN: KD0609013 & below			
				39	15036	--Blade Ass'y	1

√ recommended parts



Henny Penny Corporation
P.O.Box 60
Eaton, OH 45320

1-937-456-8400
1-937-456-8402 Fax

Toll free in USA
1-800-417-8417
1-800-417-8434 Fax

www.hennypenny.com

* FM07-018-G* Henny Penny Corp., Eaton, Ohio 45320, Revised 4-14-2014