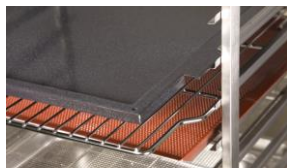
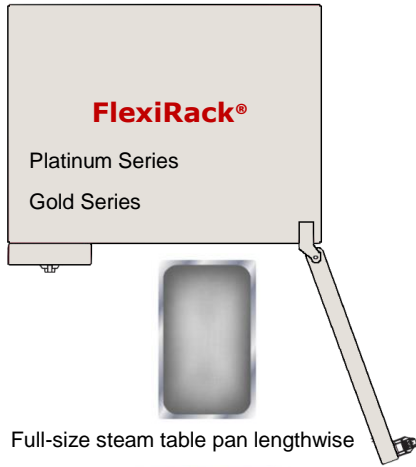


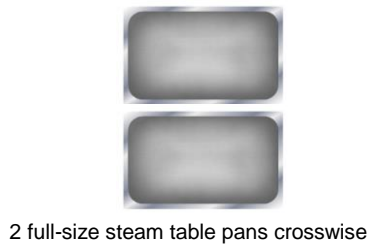
PROJECT	QUANTITY	ITEM NO
---------	----------	---------

FlexFusion™ Combi Accessories

Pan/racking capacities



Available exclusively from Henny Penny, FlexiRack pans, trays and grids have special wings that slide directly into rack runners allowing additional pan length for greater capacity.



Henny Penny FlexFusion combi ovens accommodate a wide range of pan sizes, styles and racking configurations.

Platinum Series come in two types:

FlexiRack®

Designed for FlexiRack pans and grids to add cooking capacity in units with standard power output.

- Accepts full-size steam table pans (1/1 GN) on rails in lengthwise or crosswise racks
- Extra large FlexiRack pans are designed for crosswise racks to increase capacity without compromising food quality

PowerAdvantage

Designed with higher power output for maximum capacity loads.

- Accepts full-size sheet pans on rails in sheet pan rack or on 2/1 GN wire shelves in 2/1 GN rack
- Accepts 2/1 GN pans on rails in 2/1 GN rack
- Accepts 2 full-size steam table pans crosswise on rails in 2/1 GN rack

Gold Series are available in FlexiRack models, only.

Please see separate sheet for mobile oven racks.

Recommended pan capacity

FlexiRack	615	115	215
Full-size steam table pan 2.5 in (65 mm) lengthwise	6	10	20
Full-size steam table pan 2.5 in (65 mm) crosswise	6	10	20
FlexiRack pan	6	10	20

PowerAdvantage	621	121	221
Full-size sheet pan lengthwise	6	10	20
2/1 GN steam table pan lengthwise	6	10	20
Full-size steam table pan 2.5 in (65 mm) crosswise	12	20	40

<input type="checkbox"/> APPROVED	<input type="checkbox"/> APPROVED AS NOTED	<input type="checkbox"/> RESUBMIT
AUTHORIZED SIGNATURE		DATE

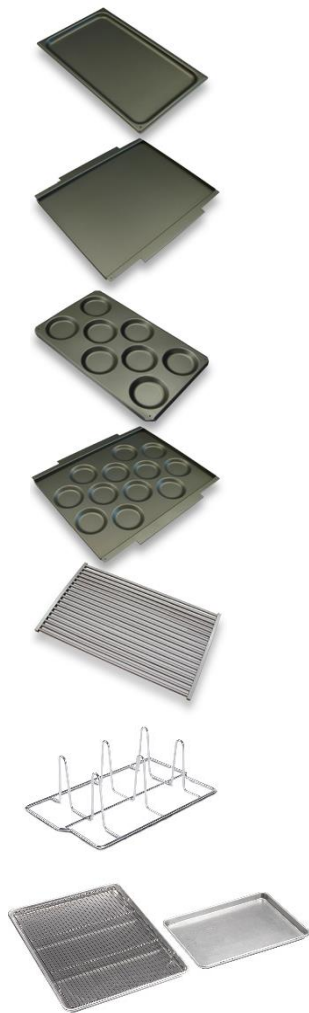


FlexFusion™ Combi Accessories

Pans, grids & trays



Henny Penny FlexFusion combi ovens accept a wide array of pans, trays and grids designed to enhance your cooking performance and convenience. Use the chart below to select size and quantity.



		FlexiRack	2/1 GN	1/1 GN	2/3 GN	1/2 GN	1/3 GN
STAINLESS STEEL PANS							
Solid	0.75 in (20 mm)						
	1.50 in (40 mm)						
	2.50 in (65 mm)						
	4.00 in (100 mm)						
Perforated	0.75 in (20 mm)						
	1.25 in (32 mm)						
	1.50 in (40 mm)						
	2.67 in (60 mm)						
	3.75 in (95 mm)						
	5.75 in (145 mm)						
	7.63 in (195 mm)						
ENAMEL PANS							
	0.75 in (20 mm)						
	1.50 in (40 mm)						
	2.56 in (65 mm)						
COATED PANS							
Stainless steel	2.00 in (50 mm)						
Aluminum	0.63 in (17 mm)						
Short cup (number of cups)		(12)		(8)			
Solid tray/aluminum							
Perforated tray/aluminum							
STAINLESS STEEL GRIDS, etc							
Wire Grid Shelves							
Drip Pan	Solid						
	Drain hole & plug						
Chicken Racks (whole birds)		(6)			(6)	(4)	
		(12)			(8)		
Grill Rack							
Grill Tray							
Wire Basket							
SHEET PANS		Full-size 18 x 26 in (457 x 660 mm)		Half-size 18 x 13 in (457 x 330 mm)			
	Aluminum 1 in (25 mm)						
	Perforated 1 in (25 mm)						

Continuing product improvement may subject specifications to change without notice.

24 Hour Technical Support:
 Henny Penny Technical Service
 800 417.8405
technicalservices@hennypenny.com

Henny Penny Corporation
 PO Box 60 Eaton OH 45320 USA
 +1 937 456.8400 800 417.8417
 +1 937 456.8434 Fax 800 417.8434 Fax
www.hennypenny.com

HENNY PENNY
 Engineered to Last